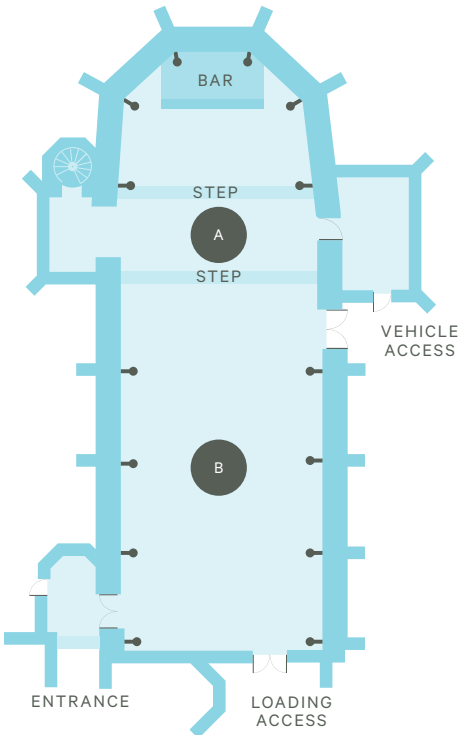


The Great Hall

Our largest room, the Great Hall can seat up to 180 people and has real impact with its superb acoustics, marble staging, atmospheric lighting and original features. A perfect room with lots of space for breakout areas, Networking drinks and a blank canvas for different Events and Layouts.



DIMENSIONS

Room Length	24.05m
Room Width	8.35m
Room Height	9.15m
Room Area	187.65m ²
Length A	3.35m
Length B	15.25m
Step Length	0.45m

FACILITIES

Sockets	48
Telephone	1
PA System	Yes
Natural Daylight	Limited
Dance Floor	Yes
Vehicle Access	Yes
Loading Access	Yes

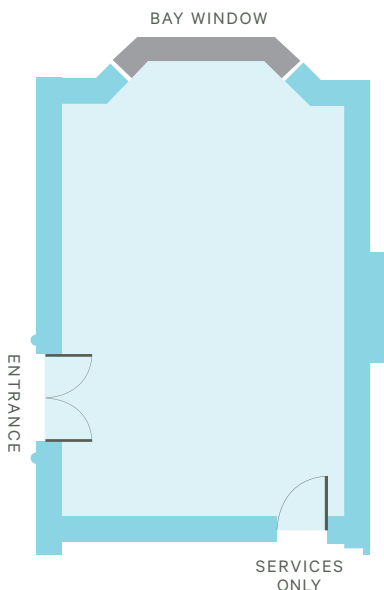
CAPACITY (using B area only)

Theatre	180
Cabaret	70
Classroom	70
U-Style	45
Banquet	140
Reception	180

LAYOUT STYLES

The Oak Suite

The Oak suite is a versatile room, perfect for any occasion with high ceilings and original features. Situated on the ground floor and easily accessible it's a superb option for private dining, theatre style lectures or boardroom meetings.



DIMENSIONS

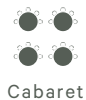
Room Length	10.36m
Room Width	6.10m
Room Height (min)	4.55m
Room Area	63.20m ²

FACILITIES

Sockets	20
Telephone	1
Natural Daylight	Yes
Blackout	Yes

CAPACITY

Theatre	40
Classroom	20
Board Room	24
U-Style	26
Dinner	40
Reception	50



The Duchy Suite

The Duchy Suite overlooks our tranquil terrace and provides a smaller, more intimate alternative to the larger suites. It is airy and open with a wall of mullioned windows and is used primarily for boardroom meetings and smaller presentations. It can accommodate up to maximum of 40 people.

DIMENSIONS

Room Length	7.00m
Room Width	5.00m
Room Height (min)	2.9m

FACILITIES

Sockets	16
Telephone	1
Natural Daylight	Yes
Blackout	Yes

CAPACITY

Theatre	30
Classroom	12
Board Room	18
U-Style	16
Dinner	30
Reception	40

LARGE MULLIONED WINDOW

